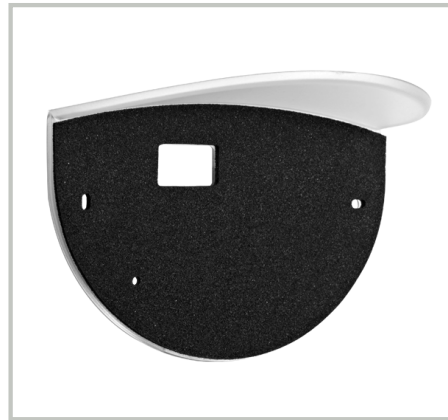




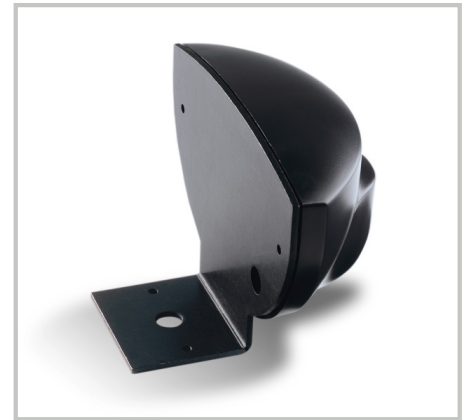
Visit website for available languages of this document.



RAIN COVER
10ERC



RAIN ACCESSORY
10ERA



MOUNTING BRACKET
10EMB



CEILING ACCESSORY
10ECA



SPACER
10EAGLESPACER



EAGLE SPACER V
10EAGLESPACERV

PRECAUTIONS

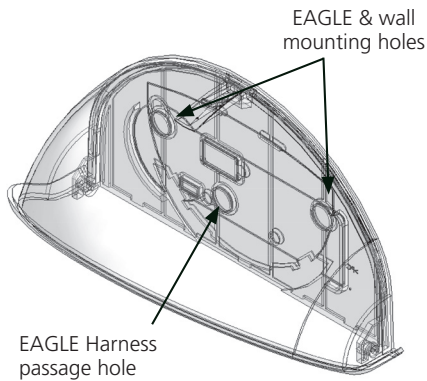


- Maintain a clean and safe environment when working in public areas.
- Constantly be aware of pedestrian traffic around the door area.
- Always stop pedestrian traffic through the doorway when performing tests that may result in unexpected reactions by the door.
- Ensure compliance with all applicable safety standards (i.e. ANSI A156.10) upon completion of installation.

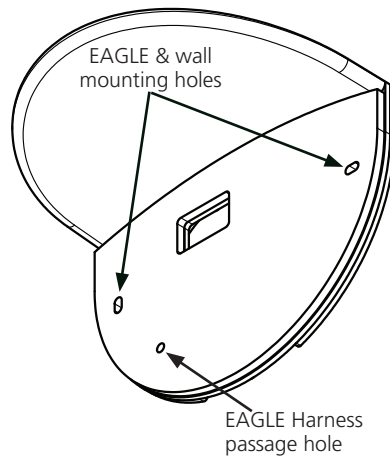
Reference *EAGLE FAMILY User's Guide (75.5957)* for full *EAGLE* installation and setup.

INSTALLATION

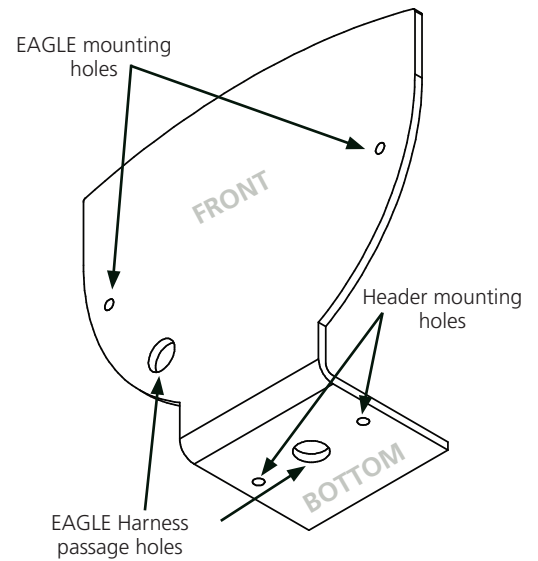
RAIN COVER 10ERC



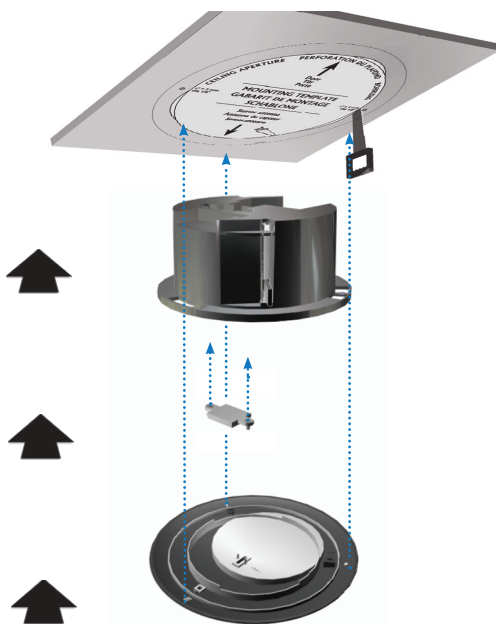
RAIN ACCESSORY 10ERA



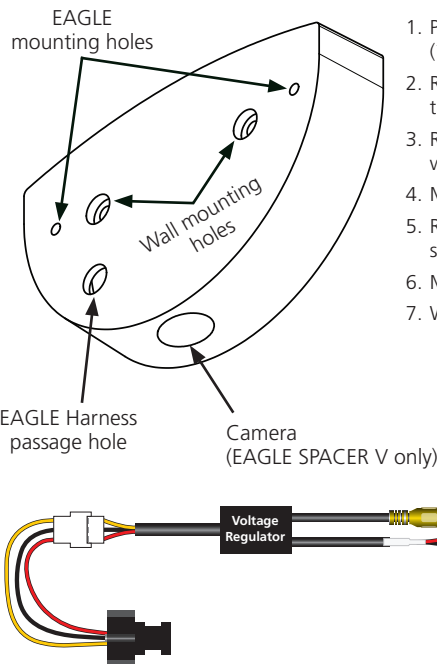
MOUNTING BRACKET 10EMB



CEILING ACCESSORY 10ECA



SPACER / SPACER V 10EAGLESPACER / 10EAGLESPACERV



1. Pre-drill the EAGLE Harness passage hole ($\frac{1}{4}$ " for SPACER, $\frac{1}{2}$ " for SPACER V).
2. Route the EAGLE Harness through the wall/header and then through the designated pass-thru on the spacer.
3. Route the EAGLE SPACER V camera harness through the wall/header and then plug into SPACER V connector.
4. Mount the spacer to wall/header using self-drilling screws.
5. Route the EAGLE Harness through the pass-thru on the sensor.
6. Mount sensor to accessory.
7. Wire the EAGLE Harness to the sensor.

CAMERA TECHNICAL SPECIFICATIONS

Voltage regulator (built into wire harness):	6.6 – 36 VDC ($\pm 10\%$) 6 – 28 VAC ($\pm 10\%$)
Operating temperature:	-30 – 60 °C (max. RH: 95%)
Video output:	1.0 (V _{p-p}) / 75Ω
Image Sensor:	CMOS
Horizontal resolution:	480 TVL
NTSC output:	720 (H) × 480 (V)
Sync system:	Inter-Sync
Frame rate:	30 fps
Min. illumination:	0.01 LUX
AE control:	auto
Gain control:	auto
Elec. shutter:	1 s ~ 1/10,000 s
S/N ratio:	> 50 dB
AWB:	auto

BEA INSTALLATION/SERVICE COMPLIANCE EXPECTATIONS

BEA, the sensor manufacturer, cannot be held responsible for incorrect installations or inappropriate adjustments of the sensor/device; therefore, BEA does not guarantee any use of the sensor outside of its intended purpose.

BEA strongly recommends that installation and service technicians be AAADM-certified for pedestrian doors, IDA-certified for doors/gates, and factory-trained for the type of door/gate system.

Installers and service personnel are responsible for executing a risk assessment following each installation/service performed, ensuring that the sensor system installation is compliant with local, national, and international regulations, codes, and standards.

Once installation or service work is complete, a safety inspection of the door/gate shall be performed per the door/gate manufacturer recommendations and/or per AAADM/ANSI/DASMA guidelines (where applicable) for best industry practices. Safety inspections must be performed during each service call – examples of these safety inspections can be found on an AAADM safety information label (e.g. ANSI/DASMA 102, ANSI/DASMA 107).

Verify that all appropriate industry signage and warning labels are in place.



Tech Support: 1-800-407-4545 | Customer Service: 1-800-523-2462 | General Tech Questions: Tech_Services@beainc.com | Tech Docs: www.BEAinc.com

©BEA | Original Instructions
75.5981.03 EAGLE FAMILY ACCESSORIES 20190320