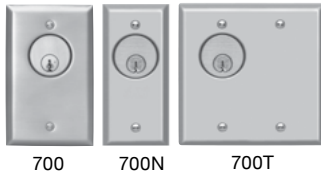


KEY SWITCHES

Distributor Discount Code **CK**

Key Cylinder sold separately: **MO** - Momentary **AA** - Alternate Action (on-off)
 Key switch assemblies compatible with 1" to 1.375" U.S. standard and interchangeable core mortise cylinders (not included).

6 AMP KEY SWITCH ASSEMBLIES



700 700N 700T

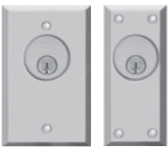


700-L2 700T-SN-L2

See Options below

20 Gauge Stainless Steel Faceplate					Contacts
1 Gang	Narrow	List	2 Gang	List	
701	701N	102.00	701T	129.00	AA SPDT
702	702N	102.00	702T	129.00	MO SPDT
704	704N	182.00	704T	203.00	1-60 Timer SPDT
705	705N	118.00	705T	140.00	AA DPDT
706	706N	113.00	706T	134.00	MO DPDT
707	707N	134.00	707T	156.00	2 MO SPDT
708	708N	140.00	708T	161.00	1 MO SPDT & 1 AA SPDT
709	709N	150.00	709T	171.00	2 AA SPDT
710	710N	203.00	710T	230.00	1-60 Timer & AA SPDT
711	711N	156.00	711T	177.00	2 MO DPDT
712	712N	156.00	712T	177.00	1 MO DPDT & 1 AA DPDT
713	713N	156.00	713T	177.00	2 AA DPDT

1/4" Thick Aluminum Plate					Contacts
1 Gang	Narrow	List			
801AL	801ALN	150.00			AA SPDT
802AL	802ALN	150.00			MO SPDT
804AL	804ALN	230.00			1-60 Timer SPDT
805AL	805ALN	171.00			AA DPDT
806AL	806ALN	171.00			MO DPDT
807AL	807ALN	193.00			2 MO SPDT
808AL	808ALN	193.00			1 MO SPDT & 1 AA SPDT
809AL	809ALN	193.00			2 AA SPDT
810AL	810ALN	272.00			1-60 Timer & AA SPDT
811AL	811ALN	220.00			2 MO DPDT
812AL	812ALN	220.00			1 MO DPDT & 1 AA DPDT
813AL	813ALN	220.00			2 AA DPDT



800 800N

SPECIFY FINISH Add to List

U 630 Dull Stainless Steel (Standard For All Key Switches Except The 800AL) **N/C**

AL 628 Anodized Aluminum (Standard For The 800AL Key Switch Only) **N/C**

Plated finishes, special order, no cancellation, no return

C 605 Bright Brass **44.00** **H** 613 Oil Rubbed Bronze **44.00**

D 606 Dull Brass **44.00** **P** 625 Bright Chrome **44.00**

OPTIONS Add to List

10TD Mini timer, adj. 1-60 second 12/24VDC, SPDT **91.00** **LT** One tricolor LED. Red, green and amber **33.00**

CYL-KD 1 1/8" Key cylinder with 2 keys (keyed differently) **33.00** **ATS** Anti-tamper sensor, SPDT **33.00**

L1 One LED. Specify red or green **22.00** **RMB** Buzzer, 12 or 24VDC, 20mA **44.00**

L2 Two LEDs. Red, and green **33.00** **SN** 85 db siren, 4V-25VDC, 15mA **54.00**



10TD

KEY CYLINDER OPTIONS Add to List

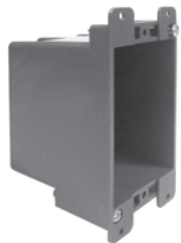
CYL-6KDK 6 pin, 1.125" mortise cylinder, keyed different, dull chrome **33.00**

CYL-6KAQ 6 pin, 1.125" mortise cylinder, keyed alike, dull chrome **33.00**



RETROFIT BACK BOX

BB1D Single Gang 2.25" w x 3.75" h x 2.75" D **14.00**



BB1D



450 SERIES - Vandal Resistant ALUMINUM Exit Switch

Distributor Discount Code

LIST



451
452
453

451N
452N
453N

Stainless Steel Button - 1/4" Thick Aluminum Plate - Security Screws - Plated Finish Not Available

1 Gang	Narrow	Contact	Sign	
451V	451NV	AA (On/Off) SPDT	None	161.00
452V	452NV	Momentary SPDT	None	161.00
453PV	453PNV	Integrated Pneumatic Timer ADJ. 1-180 sec. SPDT contact	None	454.00

Explosion Proof Exit Switch

Distributor Discount Code

LIST



SPECIFICATIONS

Contact 1 N.O. and 1 N.C., momentary
IIEC Rating DC60V 5A DC-13
Operating Temperature -50° C to 60° C

DIMENSIONS 3.95 W X 4.21 H X 4.16" D

Class I, Zone 1, AEx de IIC T6...T4 Gb / Ex de IIC T6...T4 Gb X
 Zone 21, AEx tb IIC T85°C...T135°C Db IP66 / Ex tb IIC T85°C...T135°C Db IP66 X
 Class I, Division 2, Groups A, B, C, D
 Class II, Division 2, Groups E, F, G
 Class III
 UL50, 50E, 508, UL60079-0, -1, -7, -31
 Type 3, 4, 4X, 12, 13

EP499 Explosion Proof Exit Switch (specify Green or Red Button) **2,447.00**

Passive Infrared Egress Control

Distributor Discount Code

V LIST



MD-31DOW	Motion detector with time delay, white	243.00
MD-31DB	Motion detector with time delay, black	243.00

Time Delay Relay

Distributor Discount Code

CK List



Time Delay Relays

10TD	Time delay relay module with adjustable 1-60 second relock delay. Input: 12/24V AC/DC Voltage: 2 Amps @ 30 VDC (resistive)	Output: SPDT, dry contact Size: 2-1/4"x 1-1/2" x 3/4"	91.00
-------------	--	--	--------------

SDC

SECURITY DOOR CONTROLS
 801 Avenida Acaso • Camarillo, CA 93012
 Email: Service@sdccsecurity.com • www.sdccsecurity.com