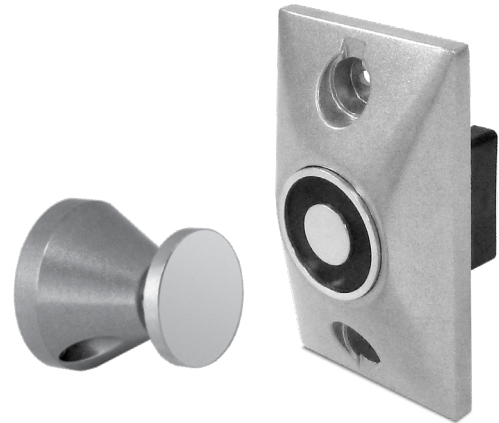


EH Series

Electromagnetic Door Holder & Releasing Devices



SDC's EH series magnetic door holders are designed to hold doors open and release the door by remote switch or fire life safety command center activation. Primary application includes holding and releasing of fire rated doors that are required to provide a barrier for fire and smoke in an emergency or the convenience of door closure by remote control.

Choice of 25, 30, 35 or 40lbs holding force determined by units specified voltage. Reduced power supply requirements and energy costs due to low power consumption (15mA to 40mA). Field selectable high holding force comes standard, reducing stock or need to special order high holding force. Screw terminal block input connections for simple and neat wiring. Innovative installation eliminates the need for secondary alignment adjustments. Ball pivot assembly enables full plate contact and holding force. Optional adjustable rod compensate for extreme misalignment up to four inches. Slotted mounting holes enable adjustment of magnet centerline.

MODELS

- EH10** Door Holder, Flush Mount
- EH20** Door Holder, Semi-Flush Mount
- EH30** Door Holder, Surface Mount
- EH40** Door Holder, Floor Mount Single
- EH42** Door Holder, Floor Mount Double

STANDARD FEATURES

- Door release and close upon power loss or fire life safety system activation
- Low power consumption
- Field selectable high holding force
- Dual AC/DC voltage configurations
- Screw terminal block input connections
- Self-aligning catch plate
- Adjustable magnet centerline



EH101224A
EH1024120A
EH1024220A



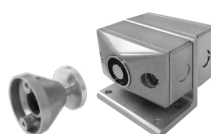
EH201224A
EH2024120A
EH2024220A



EH301224A
EH3024120A
EH3024220A



EH401224A
EH4024120A
EH4024220A



EH421224A
EH4224120A
EH4224220A



SPECIFICATIONS

	EH10	EH20	EH30	EH40	EH42
Construction	Zinc Alloy	Zinc Alloy	Zinc Alloy	Zinc Alloy	Zinc Alloy
Mount	Flush	Semi-Flush	Surface	Floor	Floor
Projection	2 ¹ / ₃₂ "	3 ¹ / ₁₆ "	4 ⁵ / ₁₆ "	5"	9 ⁵ / ₁₆ "
Fasteners	Hardware Package, Mounting Bracket	Hardware Package, Mounting Bracket	Hardware Package, Mounting Bracket	Hardware Package, Mounting Bracket	Hardware Package, Mounting Bracket
Coil	Single	Single	Single	Single	Double

PERFORMANCE DATA

Configuration	1224		24120		24220	
	Voltage	12V	24V	24V	120V	24V
DC / mA	40	40	20	-----	20	-----
AC / mA	38	7.8	19.5	19.5	33.5	7.8
Terminals	C&L	C&H	C&L	C&H	C&L	C&H
Holding Force	30 lbs	30 lbs	40 lbs	35 lbs	20 lbs	22 lbs
	13.6 kg	13.6 kg	18.1 kg	15.8 kg	9.0 kg	9.8 kg

HIGH HOLDING FORCE / SPECIAL APPLICATIONS*

Configuration	1224	24120
Voltage	24V	120V
DC / mA	85	-----
AC / mA	81	100
Terminals	C&L	C&L
Holding Force	75 lbs	110 lbs
	34.0 kg	49.8 kg

* To obtain performance values in table above, apply higher listed voltage to lower voltage terminals (C&L). This can only be applied to the above listed 1224 and 24120 configurations.

CERTIFICATIONS


UL 864 Control Units and Accessories for Fire Alarm Systems

ULC/ORD-C228 Door Closers and Holders

CSFM Listed 3550-0324:01 10

HOW TO ORDER

FOLLOW STEPS FOR ORDERING

 Designates optional step


1| SPECIFY MODEL

- EH10** Door Holder, Flush Mount
- EH20** Door Holder, Semi-Flush Mount
- EH30** Door Holder, Surface Mount
- EH40** Door Holder, Floor Mount Single
- EH42** Door Holder, Floor Mount Double

2| SPECIFY CONFIGURATION

- 1224** 12/24VAC/DC
- 24120** 24VAC/DC or 120VAC
- 24220** 24VAC/DC or 220VAC

3| SPECIFY FINISH

- A** Chrome Powder Coat  Standard
- B** Black Powder Coat

STEP NUMBER:	1	2	3
ORDERING EXAMPLE:	EH20	24120	A



RELATED PRODUCTS

EXTENSION RODS*

Extensions rod(s) may be required to ensure proper installation by providing increased reach for the armature catch plate.

EHR02A 1/2" Extension Rod, Chrome Powder Coat

EHR02B 1/2" Extension Rod, Black Powder Coat

EHR1A 1" Extension Rod, Chrome Powder Coat

EHR1B 1" Extension Rod, Black Powder Coat

EHR15A 1 1/2" Extension Rod, Chrome Powder Coat

EHR15B 1 1/2" Extension Rod, Black Powder Coat

EHR2A 2" Extension Rod, Chrome Powder Coat

EHR2B 2" Extension Rod, Black Powder Coat

EHR3A 3" Extension Rod, Chrome Powder Coat

EHR3B 3" Extension Rod, Black Powder Coat

EHR4A 4" Extension Rod, Chrome Powder Coat

EHR4B 4" Extension Rod, Black Powder Coat

EHR5A 5" Extension Rod, Chrome Powder Coat

EHR5B 5" Extension Rod, Black Powder Coat



ADJUSTABLE EXTENSION RODS*

Adjustable extension rods provide increased operational alignment where needed to ensure the best door holder operation and performance.

EHRA15A 1 1/2" Adjustable Extension Rod, Chrome Powder Coat

EHRA15B 1 1/2" Adjustable Extension Rod, Black Powder Coat

EHRA4A 4" Adjustable Extension Rod, Chrome Powder Coat

EHRA4B 4" Adjustable Extension Rod, Black Powder Coat



* See installation instructions for guidance on determining extension rod and adjustable extension rod length.

REPLACEMENT PARTS

EHBBA 2 5/8" x 4 7/8" 1 1/2" Surface Back Box, Chrome Powder Coat.

EHBBB 2 5/8" x 4 7/8" 1 1/2" Surface Back Box, Black Powder Coat.

EHCPA Catch Plate, Chrome Powder Coat.

EHCPB Catch Plate, Black Powder Coat.

EHSBAA Catch Plate Assembly, Chrome Powder Coat.

EHSBAB Catch Plate Assembly, Black Powder Coat.



INSTALLATION TOOLS

Attach drill fixtures to the door for quick and accurate hole locations. Utilize extension wrenches to tighten extension rods to catch plate assemblies.

EHW Extension Wrench



