

Securitron® M680E Series Magnalock®

ASSA ABLOY

The global leader in
door opening solutions



Discover EcoMag Technology.

When strength and aesthetics matter, the Securitron M680E EcoMag is the most advanced, sustainable electromagnetic lock available.

Strength, Flexibility & Quick Installation

- Increased 1,200 lbs holding force adds an increased level of security to the access point
- All-in-one optional integrated accessories provide flexibility to customize as needed
- New strike plate mounting template makes installation faster than ever

Advanced Intelligence

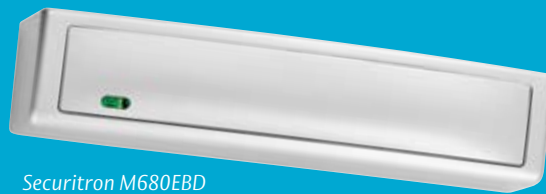
- Optional door prop sensing allows the magnet to de-energize the coil when the door is held open, dropping power as low as 20mA
- Autosensing dual voltage with microprocessor technology
- Optional integrated Door Position Switch and BondSTAT lock sensor

Sustainable Inside & Out

- Up to 80% decrease in energy consumption over the previous model with average power draw as low as 60mA at 24V
- Sustainability documentation outlines the environmental impact of this product and are available for use in specification requirements
- Completely biodegradable foam packaging insert means less waste



Securitron M680EBDX



Securitron M680EBD



Grade 2



MagnaCare
Warranty



Auto Sensing
Dual Voltage
12/24



PoE
Friendly

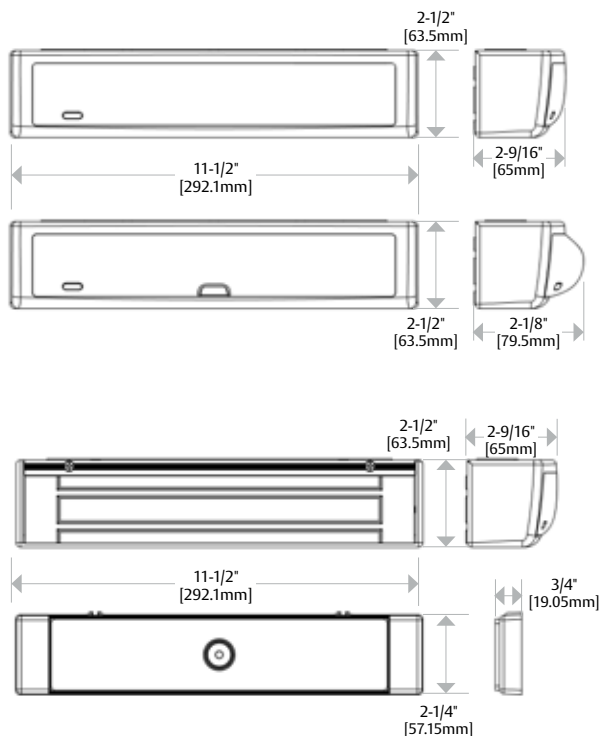


Fire Rated



Preload

Dimensions



Specifications

Certifications

- UL 10C Fire Rated, 1 Hour
- CAN/ULC-S104 Fire Door Conformant
- UL1034 Burglary-Resistant Listed
- UL294 Recognized Component
- ANSI/BHMA A156.23, Grade 2; E18501
- California State Fire Marshal Listed

Electrical Consumption

- **Maglock Average Power Draw (±10%)**
 - 113mA at 12VDC
 - 52mA at 24VDC
- **Maglock Maximum Power Draw (±10%)**
 - 515mA at 12VDC
 - 290mA at 24VDC
- **REX Power (±10%)**
 - Adds 25mA at 12VDC
 - Adds 10mA at 24VDC

Holding Force

- 1,200 lbs [544kg]

Operating Temperature

- 32° to 110°F [0° to 43°C]
- Indoor use only

Shipping Weight

- 8 lbs [3.6kg]

Features

Standard Features

- Sustainability documentation
- Energy efficient, low power usage
- Automatic dual-voltage – no field adjustment required
- LED Indicator shows the lock is secure, open, or has an incomplete bond
- Tamper Switch sends an alarm output if the cover is removed and is selectable to NO or NC
- Available integrated BondSTAT and Door Position Switch
- Autosensing dual voltage with microprocessor technology
- Rust resistant – all ferrous metal surfaces plated for durability
- Adjustable automatic relock timer (0 to 30 seconds) *BD and BDX Only*
- Wire chamber anti-tamper switch
- Size optimized for use with door closers
- MagnaCare® lifetime replacement, no fault, no questions asked warranty

Optional Features

- **BD** Patented BondSTAT lock sensor and integrated Door Position Switch (DPS) with relock timer
- **X** Integrated passive infrared request to exit

How to Order

| Model Series | Monitoring Options | Accessory Options | Finish Options |
|------------------------|--|--|---|
| M680E | BD | X | – 606 |
| M680E 1,200 lbs | (blank) No Monitoring BD BondSTAT Monitor & Door Position Switch | (blank) No Accessory Options X PIR Request to Exit | 628/US28 Satin Aluminum Clear 605/US3 Bright Brass 606/US4 Satin Brass 612/US10 Satin Bronze 613E Dark Oxidized Satin Bronze 629 Bright Stainless Steel 630 Satin Stainless Steel BSP Black Suede Powder WSP* White Suede Powder |

*Finish option available soon. Please contact your Sales Representative for product details, availability and pricing.