



MS09

IP65 RATED, MICROWAVE
TOUCHLESS ACTUATOR



VIDEO



[Watch the product video](#)

TECHNOLOGY



CERTIFICATIONS

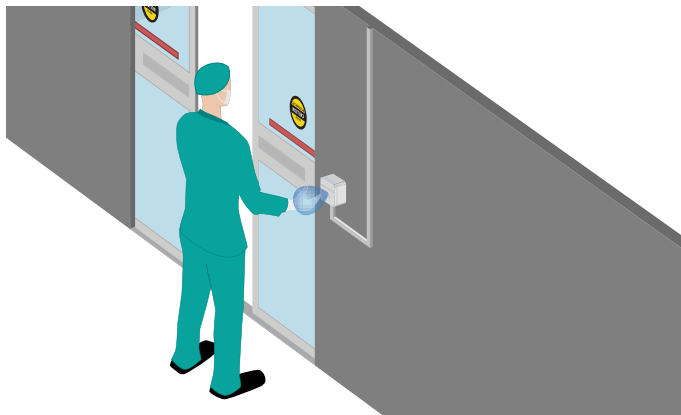


DESCRIPTION

BEA's IP65 rated **MS09** is a touchless activation device with an adjustable detection zone designed for harsh and industrial environments.

The surface mount **MS09** utilizes microwave motion technology to ensure consistent and dependable activation. Conduit connectivity ensures a watertight installation in harsh environments and wash-down facilities.

The **MS09** detects moving objects such as a hand, pallet jack or forklift and is ideal for applications requiring a touchless activation method including hospitals, pharmacies, clean rooms and food services.

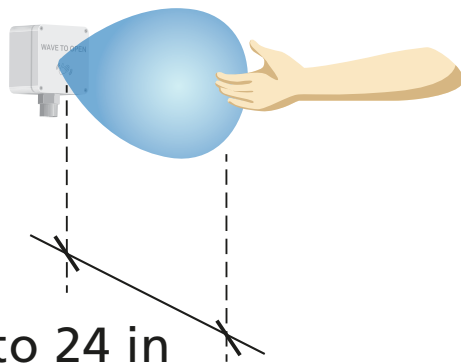


Weather-Resistant Housing

IP65 enclosure capable of use in industrial and extreme environments, as well as washdown facilities

Adjustable Detection Zone

User defined detection zone from 4 – 24 inches (pulse or toggle)



Appropriate For All Environments

Can be used in a variety of indoor and outdoor applications.

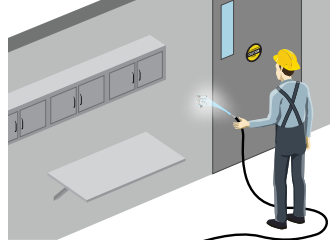
No Mounting Accessories Needed

External mounting boxes are not required

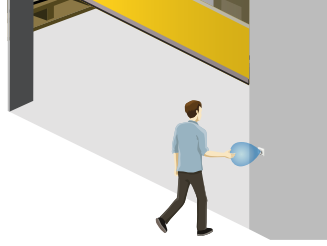
APPLICATIONS



Clean Rooms



Washdown Areas



Industrial Environment

TECHNICAL SPECIFICATIONS

Technology	Microwave Doppler Radar
Radiated Frequency	24.125 GHz
Radiated Power Density	5 mW / cm ²
Detection Mode	Motion (bidirectional)
Sensing Zone**	4 – 24" (adjustable)
Output	Relay with switch-over contact (free of potential)
Max. Contact Voltage	60 VDC / 125 VAC
Max. Contact Current	1 A (resistive)
Max. Switching Power	30 W (DC) / 60 VA (AC)
Output Hold Time	0.5 s (in pulse mode)
Supply Voltage	12 – 24 VAC ±10% 12 – 24 VDC 30% / -10%
Power Consumption	< 1.2 W
Material / Colors	ABS / PC, White
Cable Type	Compatible with standard, 4-conductor low voltage cable (cable not supplied)
Temperature Range	-4 – 131 °F
Degree of Protection	IP65
Norm Conformance	EMC: 2004 / 108 / EC FCC: G9B-MS08 / 2ABW5-10TD900PB IC: 4680A-MS08 / 4680A-10TD900PB
Dimensions	3.15" (W) × 3.23" (H) × 2.165" (D)

** See User's Guide

PRODUCT SERIES



10MS09TL
Text & Logo faceplate



10MS09L
Logo only faceplate



10RD900
900 MHz Receiver
module



10TD900TR
900 MHz retrofit
transmitter

EXENCIÓN DE RESPONSABILIDAD La información se proporciona con la condición de que las personas que la reciban tomarán su propia determinación en cuanto a su idoneidad para sus fines antes de su uso. En ningún caso BEA será responsable por daños de cualquier naturaleza que resulten del uso o la dependencia de la información de este documento o de los productos a los que se refiere la información. BEA tiene el derecho sin responsabilidad de cambiar las descripciones y especificaciones en cualquier momento.

WWW.BEASENSORS.COM



BEA AMERICAS / RIDC Park West / 100 Enterprise Drive / Pittsburgh, PA
T 1-800-523-2462 / F 1-888-523-2462 / E info-us@BEAsensors.com

A Halma company